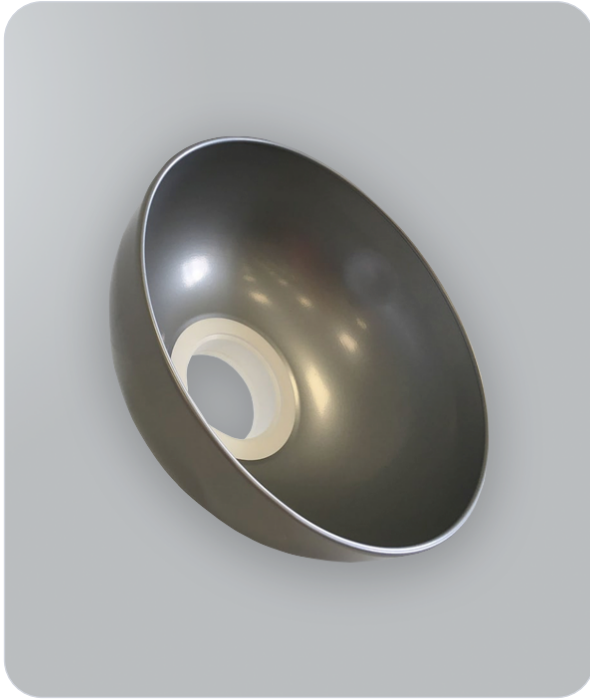


350mm Metal Round Hood - FumeKART

SKU: 503-398



Features & Benefits

- ◆ Compatible with FumeKART 100mm arm
- ◆ 380mm metal round hood for optimal fume capture
- ◆ Made from durable metal for long-lasting use
- ◆ Ideal for laser, welding, and other high-performance applications
- ◆ Helps maintain a clean and safe workspace
- ◆ Easy to install and integrate into existing systems

About the 350mm Metal Round Hood - FumeKART

The BOFA 350mm Metal Round Hood for Fume KART (100mm arm) is a durable and efficient fume extraction solution designed to fit the 100mm arm of the Fume KART.

Made of robust metal, this 350mm round hood captures harmful fumes and particulates generated during industrial processes, ensuring a cleaner and safer working environment.

Ideal for laser cutting, welding, and other high-performance applications, this attachment enhances the overall efficiency of the fume extraction system.

Specifications

Property	Detail
Application	ESD-protected areas, electronics mfg, cleanrooms