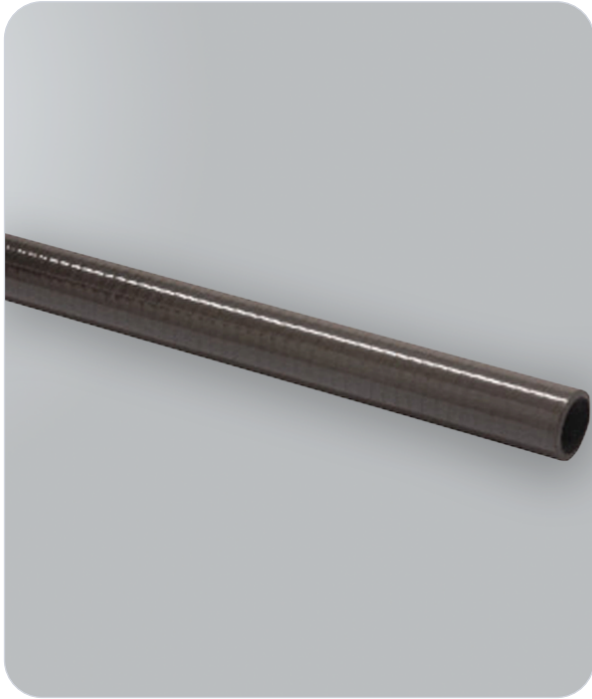


50mm Straight Tube - 2.5m length

SKU: 503-612



Features & Benefits

- ◆ **Durable construction:** Designed for long-lasting use and performance
- ◆ Ideal for use with BOFA extraction units and other industrial applications
- ◆ Ensures efficient airflow and dust/fume extraction

About the 50mm Straight Tube - 2.5m length

The BOFA 50mm Straight Tube, with a 2.5m length, is an essential component for connecting your filtration system with ease and reliability.

Designed for use with BOFA extraction units, this durable tube ensures efficient airflow and secure connections, providing a seamless solution for maintaining a clean and safe working environment.

Its flexible design makes installation simple, while the 50mm diameter ensures a perfect fit for most applications.

Specifications

Property	Detail
Length	2.5m for extended reach and flexible use
Diameter	50mm
Application	ESD-protected areas, electronics mfg, cleanrooms