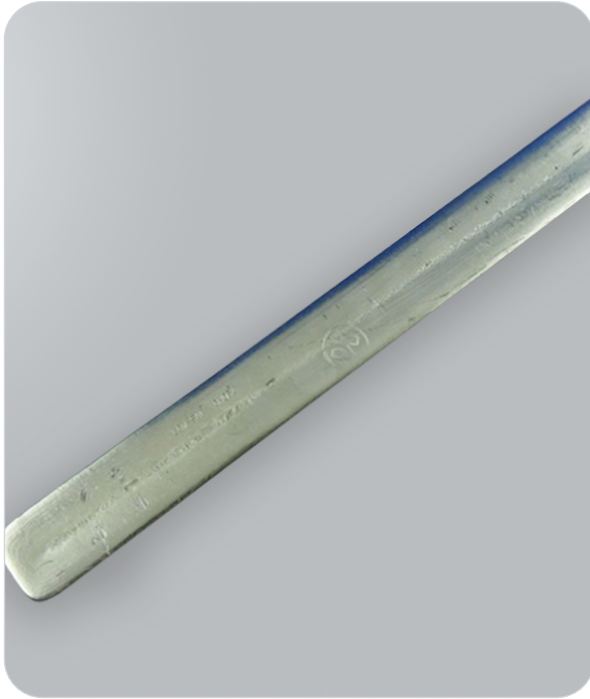


# Bar Solder Tin/Lead 63/37 1Kg

SKU: GES31B



## Features & Benefits

- ◆ **Alloy composition:** 63% Tin, 37% Lead
- ◆ Manufactured from high-purity Tin (99.965%) and Lead
- ◆ **Meets BS EN 29453**, conforming to British industrial standards
- ◆ **Consistently bright joints** for a clean finish
- ◆ **Reduced icicling and bridging** for precise soldering
- ◆ **Improved and uniform wetting** for better soldering results
- ◆ **Extremely low dross formation** for reduced waste
- ◆ **Longer bath life** for efficient, cost-effective use
- ◆ **Reduced consumption** for high productivity
- ◆ **Suitable for all forms of soldering**, including wave soldering and surface mounting techniques
- ◆ **Supplied in 1Kg bars** for convenience

## About the Bar Solder Tin/Lead 63/37 1Kg

The Bar Solder Tin/Lead 63/37 (1Kg) is a high-purity solder that meets and exceeds the European Standard BS EN 29453, ensuring superior performance for a wide range of soldering applications.

Manufactured from 99.965% Tin and Lead, this solder offers consistently bright joints, reduced icicling and bridging, and improved wetting. Ideal for wave soldering, through-hole assembly, and surface mounting techniques, it features extremely low dross formation, longer bath life, and reduced consumption, leading to high productivity and a low reject rate.

This solder is designed to meet all British industrial standards, making it a reliable choice for both professional and industrial use.

## Specifications

Property	Detail
Application	ESD-protected areas, electronics mfg, cleanrooms