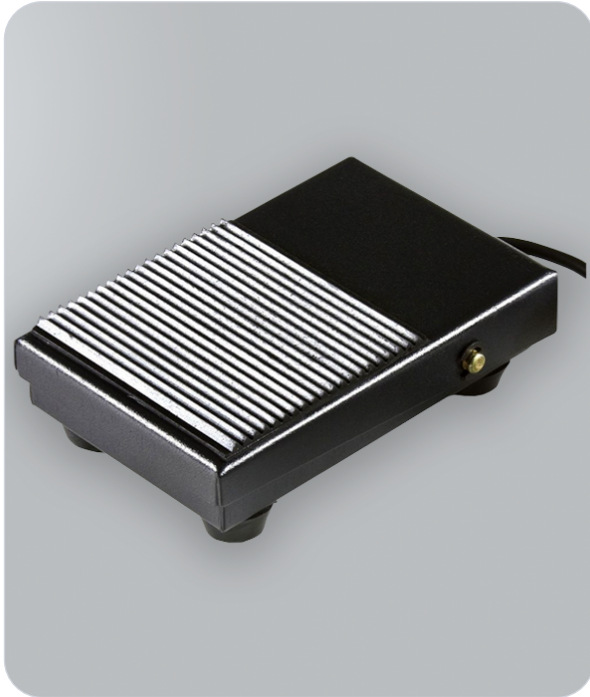


DentalPRO 250/400 Footswitch

SKU: 503-598



Features & Benefits

- ◆ Compatible with the Xtract series and DentalPRO unit range
- ◆ Allows hands-free operation for increased convenience
- ◆ Enhances safety and efficiency in dental laboratories
- ◆ Ideal for controlling dust and fume extraction systems
- ◆ Part of BOFA's specialist range of dust and fume extraction accessories

About the DentalPRO 250/400 Footswitch

The BOFA DentalPRO 250/400 Footswitch is a versatile and user-friendly accessory, designed for use with the Xtract series and the DentalPRO unit range.

This footswitch allows hands-free operation of the extraction system, providing ease and convenience while maintaining a safe and efficient working environment in dental laboratories.

Compatible with:

- DentalPRO 250
- DentalPRO 400

Specifications

Property	Detail
Application	ESD-protected areas, electronics mfg, cleanrooms