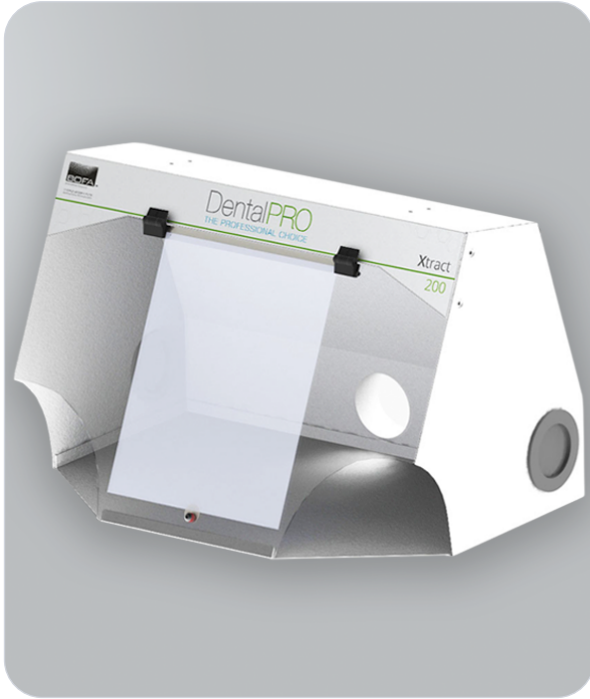


DentalPRO Xtract 200

SKU: 503-409



Features & Benefits

- ◆ Designed for dental hand finishing and monomer mixing applications
- ◆ Efficient filtration of dust and fumes
- ◆ **Well-lit** enclosure for clear visibility
- ◆ **Compact** and space-efficient design for bench-top use
- ◆ Powder-coated mild steel construction

About the DentalPRO Xtract 200

The BOFA DentalPRO Xtract 200 is a high-performance dust and fume extraction cabinet designed specifically for dental hand finishing and monomer mixing applications.

Perfectly suited for manual bench-top work, this compact unit provides a clean, well-lit working environment, ensuring that dust particles and fumes are effectively filtered.

The DentalPRO Xtract 200 allows dental technicians to work comfortably, knowing that air quality is maintained, and safety is prioritised. Its robust design, including powder-coated mild steel construction, makes it a durable and essential tool for dental laboratories.

Specifications

Property	Detail
Voltage	115-230V
Dimensions	355 x 540 x 400mm
Recommended face velocity	0.5m
Application	ESD-protected areas, electronics mfg, cleanrooms