

STANDARD LAB COATS

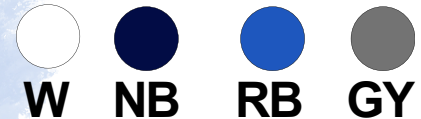
ESD



Main Features

- EC61340-5-1 Compliant
- Comfortable, breathable material
- 2 side pockets and 1 breast pocket
- Quick opening and closing snaps
- Static dissipative threads woven in to fabric
- ESD Logo

Available colours **White, Navy Blue, Royal Blue and Grey**



Optional extra

- Custom embroidered logo service (MOQs Apply)



P/N : 702-LC-COLOUR-SIZE**

Composition - 63% Polyester 33% Cotton 4% Conductive Fibre - 120gr/m2

SIZE - CM		Tolerance	XS	S	M	L	XL	2XL	3XL	4XL	5XL
A	½ Chest	±2	52	54	56	58	60	62	64	66	68
B	Back	±2	86	89	90	92	93	94.5	96	97	99
C	Shoulder	±1	44.5	46	48	50	52	54	55.5	57.5	59.5
D	Sleeve	±1	62	62	63	64	65	65	66	66	67

** When ordering please replace the colour and size with your options. For example 702-LC-RB-XL

* 1/2 CHEST (or half-chest) is used instead of a full circumference measurement to ensure accuracy, as it avoids errors caused by fabric stretching or inaccurate wrapping around the body. This method helps to determine the actual size of the garment.

ESD garment measurements

A. 1/2 CHEST

* Measurement of the garment laid flat, taken from one armpit to the other

B. BACK LENGTH

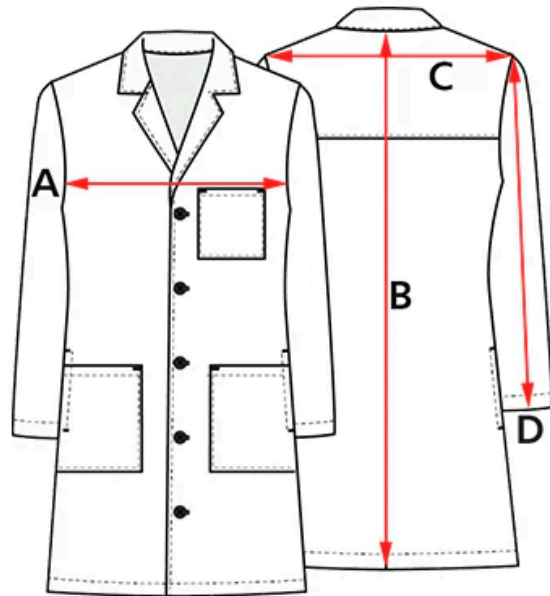
Measurement from the top collar joint to the bottom of the hem

C. SHOULDER

Measurement across the shoulders

D. SLEEVE

Measurement from the top of the arm



Washing instructions

- In order to preserve the long life of ESD clothing, you are advised to use industrial laundries who can provide controlled, documented washing procedures and environment.
- MACHINE WASHABLE in cold or not warmer than 40°C (104°F) lukewarm water with neutral liquid detergent.
- DO NOT USE detergent or fabric softeners containing bleach or chlorine or any other form of alkalis or acids.
- TUMBLE DRY on low heat or dry in the open.
- DOES NOT require ironing, but if necessary the maximum temperature is 150°C (302°F) or lower.
- DRY CLEANABLE with any solvent except Trichloroethylene.

