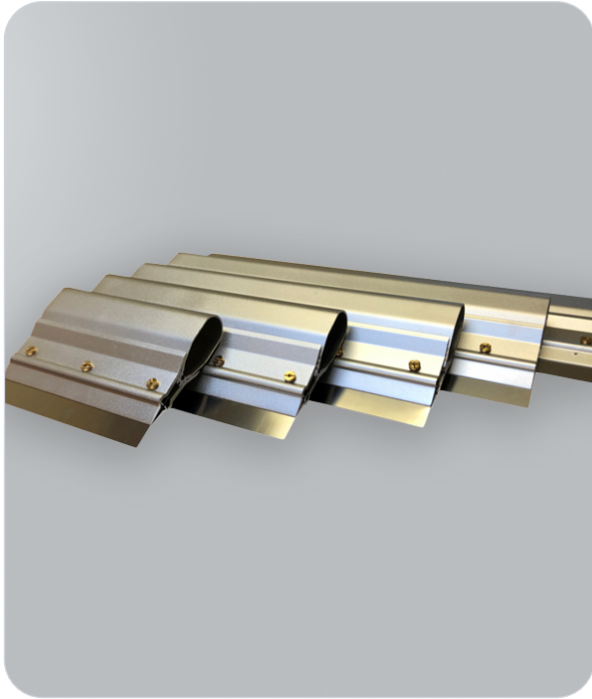


Hand Held Metal Blade Squeegee

SKU: 601-080 | Sizes: 150mm, 230mm, 305mm, 360mm, 405mm



Features & Benefits

- ◆ **Lightweight Aluminium Construction:** Ensures ease of use and durability.
- ◆ **Versatile:** Suitable for both small and large solder paste printing tasks.
- ◆ **Multiple Widths:** Available in 5 widths to accommodate various applications.
- ◆ **Replacement Blades:** Stainless steel replacement blades available for extended use.
- ◆ **Efficient Printing:** Provides consistent, high-quality solder paste application for improved results.

About the Hand Held Metal Blade Squeegee

Hand Held Metal Blade Squeegee is a lightweight, durable aluminium squeegee designed for both small and large solder paste printing applications.

Ideal for precise and efficient paste application, it is available in five different widths to cover a wide range of printing needs. For added convenience, replacement stainless steel squeegee blades are also available.

Specifications

Property	Detail
Application	ESD-protected areas, electronics mfg, cleanrooms