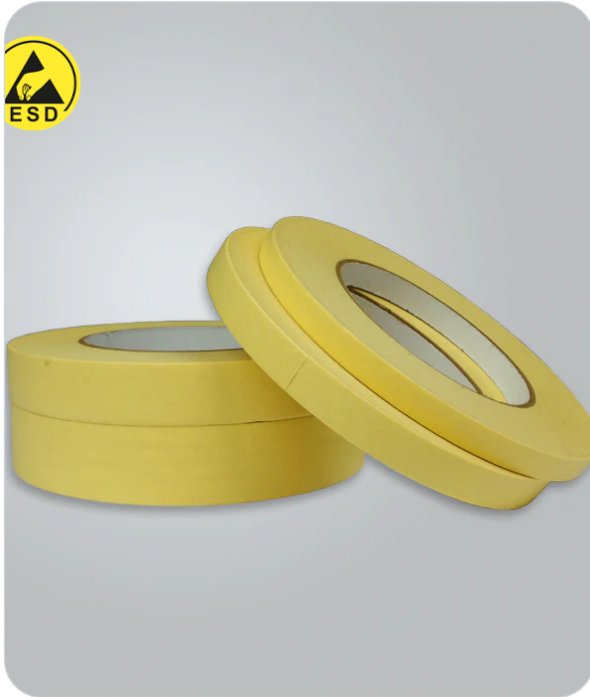


High Temperature Conformal Coating Masking Tape ESD

SKU: 301-018 | Sizes: 9.5mm, 11mm, 12.7mm, 19.05mm, 25.1mm, 50mm, 100mm



Features & Benefits

- ◆ Protects components from moisture, dust, chemicals, and temperature fluctuations
- ◆ Made from high-temperature resistant paper
- ◆ Rubber adhesive for strong adhesion and clean removal
- ◆ Yellow colour for high visibility
- ◆ **Total thickness:** 180 ± 5 microns
- ◆ **Peel strength:** >0.28 kN/m
- ◆ **Initial tack:** >10# (ball test) for quick application
- ◆ **Holding power:** over 15 hours
- ◆ Supplied on a 50m roll with a 3" plain paper core

About the High Temperature Conformal Coating Masking Tape ESD

These high-temperature masking tapes are designed for both conformal coating and alloy wheel masking, providing reliable protection across industries such as electronics, aerospace, automotive, and medical devices.

Conformal coating, a thin polymer or silicone-based layer applied to circuit boards and components, protects against moisture, dust, chemicals, and temperature fluctuations without affecting functionality.

In alloy wheel masking, the tapes shield areas like the tyre bead and valve stem during painting to ensure clean, precise finishes.

Made from high-temperature resistant paper with a strong rubber adhesive, the bright yellow tapes offer excellent adhesion, clean removal, and withstand temperatures up to 160°C, making them ideal for demanding applications.

Specifications

Property	Detail
Temperature	160°C
Application	ESD-protected areas, electronics mfg, cleanrooms