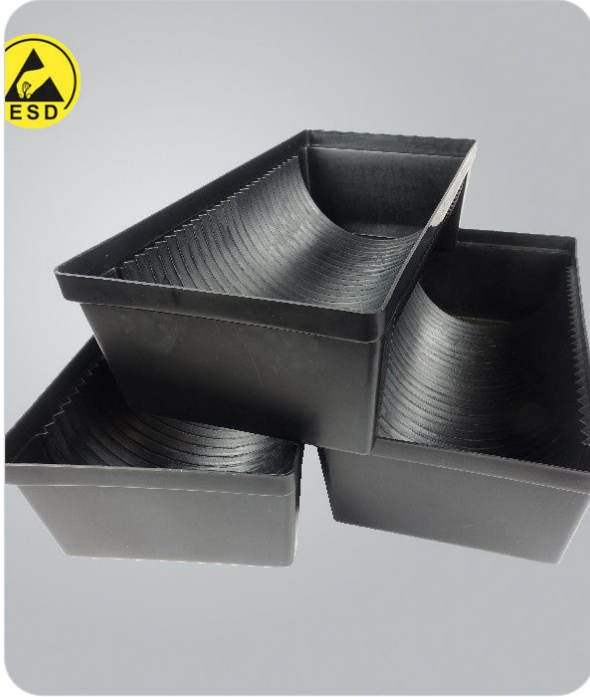


SMD 7" Component Reel Holder ESD

SKU: 109-101



Features & Benefits

- ◆ Easily store SMD reeled components on a shelf for efficient organisation.
- ◆ Holds up to **26 x 7" (180mm) reels**, perfect for bulk storage.
- ◆ Manufactured from black conductive polypropylene, providing ESD protection.
- ◆ ESD-safe design to prevent damage to sensitive components.
- ◆ **2mm thick walls** for durability and secure reel storage.

About the SMD 7" Component Reel Holder ESD

The 7" SMD Component Reel Holder is a premium storage solution designed to securely hold up to 26 x 7" (180mm) SMD reels. Perfect for storing SMD reeled components on a shelf, this ESD-safe holder is manufactured from high-quality black conductive polypropylene, offering reliable protection for ESD sensitive components.

With **external dimensions of 400 x 190 x 110mm** (L x W x H), it is compact yet provides ample space for organised storage.

The holder's 2mm thick walls ensure strength and durability, making it an ideal choice for safely storing your SMD reels in environments where static control is crucial.

Specifications

Property	Detail
Dimensions	400 x 190 x 110mm
Application	ESD-protected areas, electronics mfg, cleanrooms