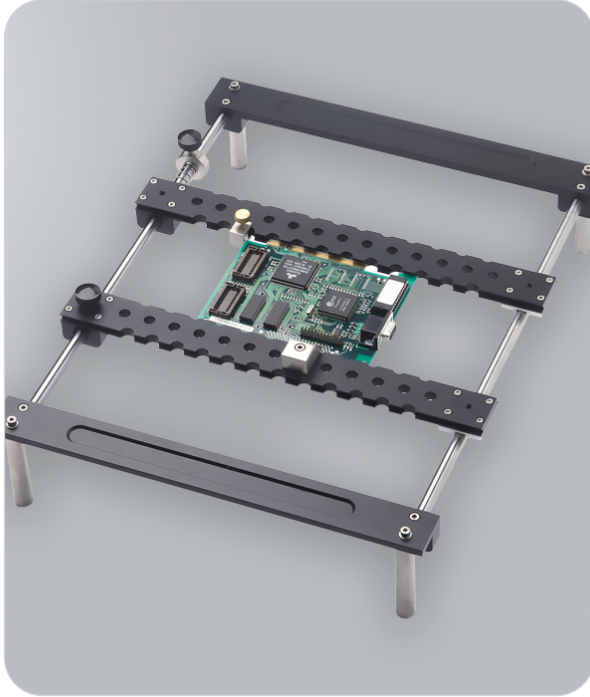


# Weller WBH (2 x PCB holder)

SKU: GW-WBH-PCB



## Features & Benefits

- ◆ **Accommodates boards up to 260 mm (10.24") wide** with unlimited length for flexibility
- ◆ Stop pin for repeatable x-y positioning, ensuring precision
- ◆ Spring-loaded arm for easy and efficient PCB insertion
- ◆ Lightweight and portable for easy adaptation to various work environments
- ◆ **Compatible with Weller pre-heaters:** WHP200, WHP1000, WHP3000 for optimal heat control
- ◆ Ideal for R&D, prototyping, production, and component rework
- ◆ Simple, elegant, and versatile design to suit various applications

## About the Weller WBH (2 x PCB holder)

The Weller WBH 2 x PCB Holder is a versatile and lightweight open-frame design, specifically engineered to work seamlessly with Weller under-board pre-heaters.

Its portability and simple yet elegant design make it ideal for a wide range of applications, from R&D prototyping to production and component rework.

The holder can accommodate boards up to 260 mm (10.24") wide with unlimited length, offering precision and repeatability with its stop pin for x-y positioning. The spring-loaded arm makes PCB insertion quick and easy, streamlining your workflow.

## Specifications

Property	Detail
Application	ESD-protected areas, electronics mfg, cleanrooms