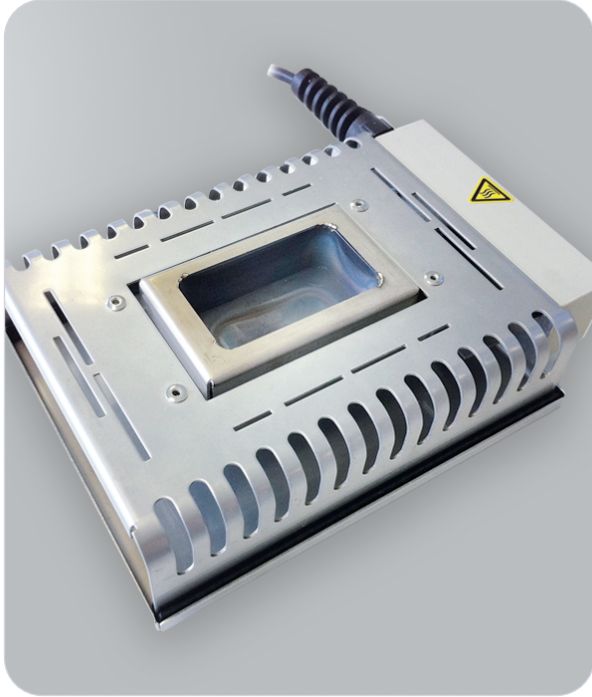


Weller WSB150 Soldering Bath

SKU: GW-WSB150



Features & Benefits

- ◆ 150 W, 24 V power for efficient soldering.
- ◆ V2A tray to prevent solder residue from dripping, ensuring a cleaner workspace.
- ◆ **Heat-up time** of approximately 10 minutes (50°C – 350°C) for quick readiness.
- ◆ Compatible with Weller 150 W digital stations like PUD151, WD2, and WD2M.
- ◆ For lead-free solder, catering to modern soldering standards in electronics and automotive industries.
- ◆ It features a V2A tray to effectively contain solder residue, keeping your workspace clean and your tools free from excess solder buildup

About the Weller WSB150 Soldering Bath

The Weller WSB150 Soldering Bath is designed to improve your soldering process by guarding against the mess and inefficiency caused by dripping solder residue.

This 150 W, 24 V soldering bath is ideal for use with PUD151, WD2, and WD2M stations, ensuring compatibility with a wide range of Weller digital stations. It features a V2A tray to effectively contain solder residue, keeping your workspace clean and your tools free from excess solder buildup.

With a temperature range of 50°C to 550°C, the Weller WSB150 offers excellent versatility for both lead-free solder applications and precision tasks that require accurate heat control. Its compact size (58 x 33 x 19 mm for the soldering bath and 150 x 120 x 65 mm for the housing) makes it easy to integrate into workspaces without taking up too much room, while its heat-up time of approximately 10 minutes (50°C – 350°C) ensures you're ready for work quickly.

This soldering bath is the perfect solution for maintaining a clean and efficient soldering environment, particularly in industries where precision and cleanliness are paramount, such as electronics and automotive.

Specifications

Property	Detail
Temperature range	from 50°C to 550°C for versatile soldering applications
Dimensions	58 x 33 x 19 mm
Application	ESD-protected areas, electronics mfg, cleanrooms